

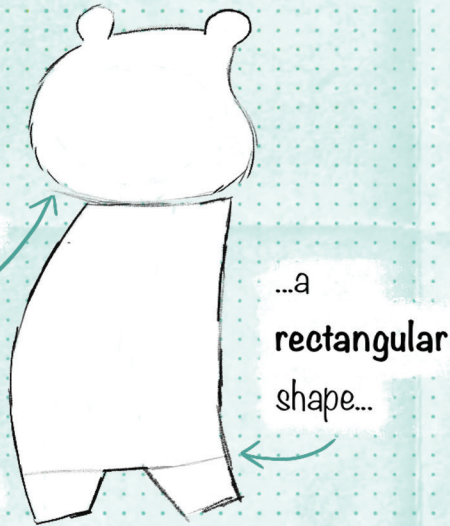


How to Draw Bertha!

STEP 1.

Lightly draw some **semi-circles** for ears, a **round** shape for a head...

...and **two small squares** for legs.



STEP 2.

...add **circles** for eyes and add a **nose**, a **mouth** and **triangular** shapes for glasses...



STEP 3.

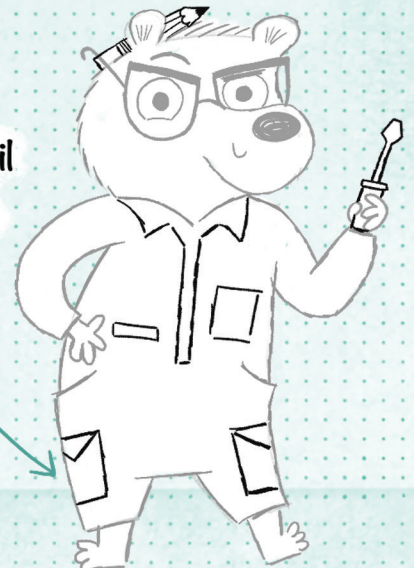
...add an **outline** of Bertha's outfit...

...add little **sausage** shapes for Bertha's paws...



STEP 4.

...add some **details** like **pockets**, a **pencil** and a **screwdriver**...



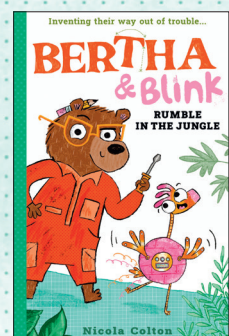
STEP 5.

...add details like **pattern** and **texture**...



STEP 6.

... and add some **colour**. Ta-Da!

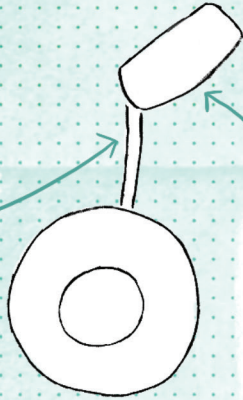




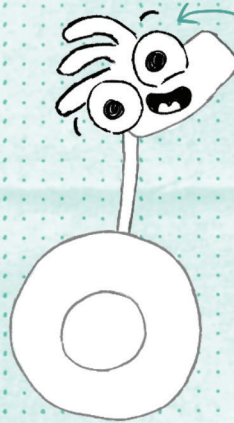
How to Draw Blink!

STEP 1.

Lightly draw some circles for Blink's body, a stick shape for a neck...



...and this Rectangular shape for Blink's beak...

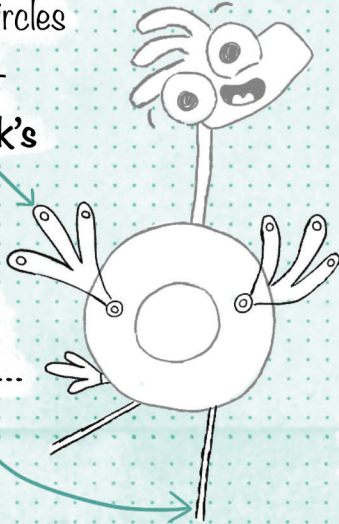


STEP 2.

...add circles for eyes, a smiley mouth, some wiggly-shapes for Blink's crest and some eyebrows...

STEP 3.

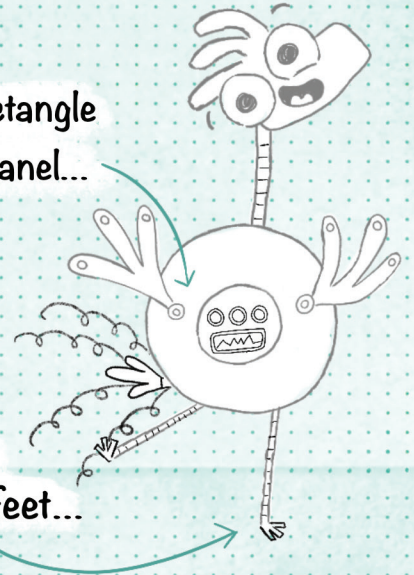
...add two little circles and two wiggly-shapes for Blink's wings...



...add two stick shapes for legs...

STEP 4.

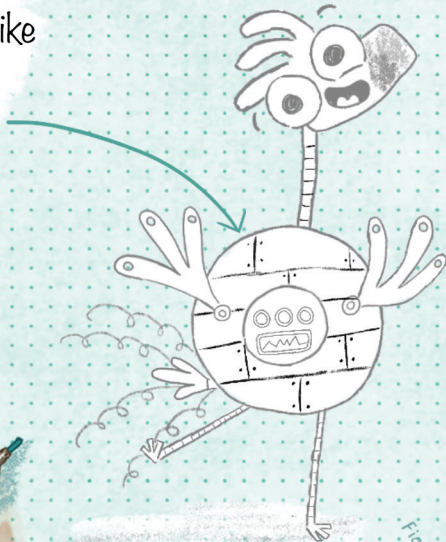
...add some details like circles and a rectangle on Blink's control panel...



...and some springs for Blink's feathers and little stick-shapes for Blink's feet...

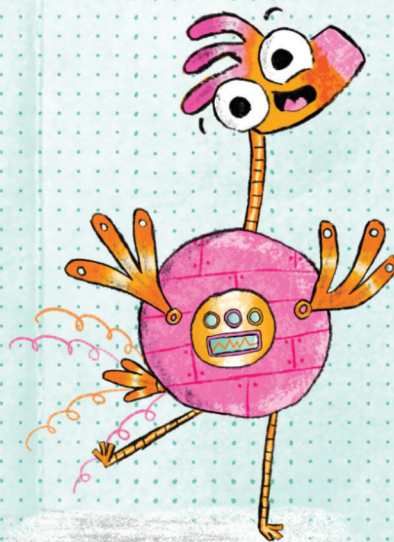
STEP 5.

...add details like pattern and texture...



STEP 6.

... and add some colour. Ta-Da!



Design Your Own Gadget!

Some Things You Can Add To Your Gadget:

Springs, Cogs & Gears:



Flashing Lights & Buttons:



A Remote Control:



Some Things To Think About:

What does your gadget do?

What does it look like?

What could you add to your gadget to make it even more wacky?

