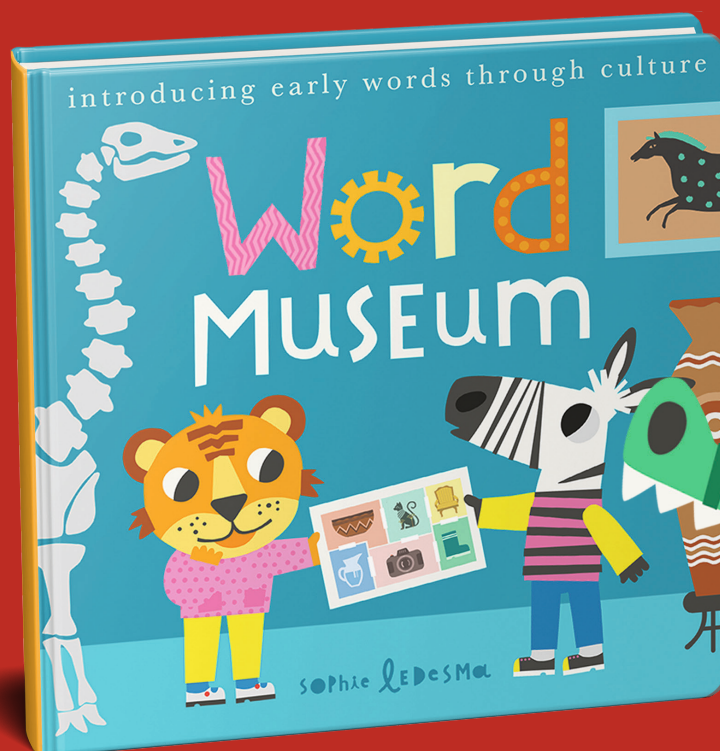
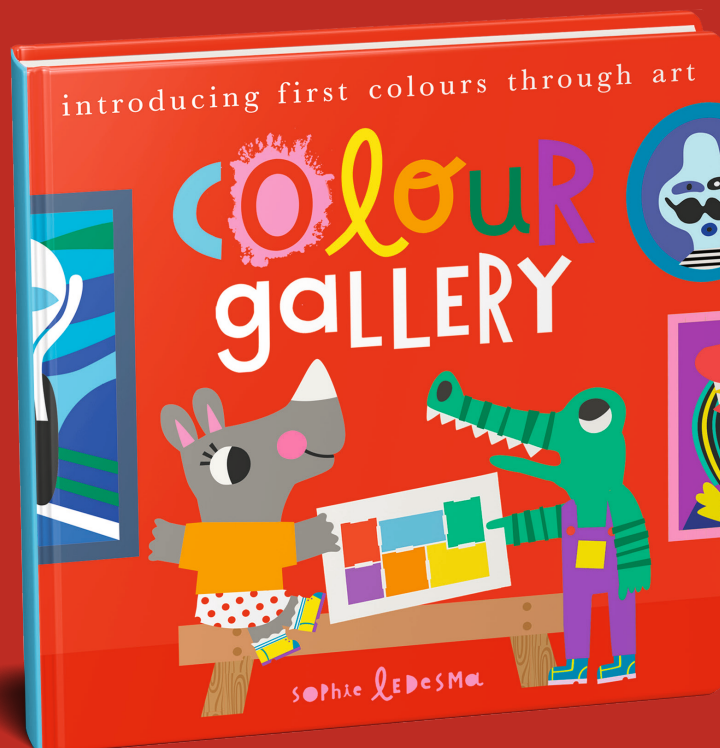
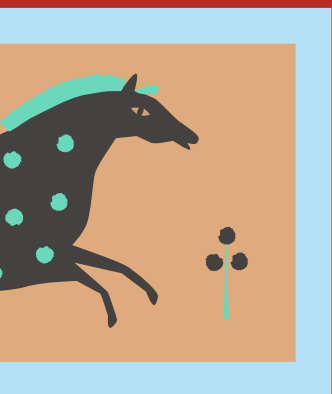


# Authorless Event Guide for *Colour Gallery* and *Word Museum*



LITTLE TIGER  
LONDON

*Welcome to the **Colour Gallery** and **Word Museum**!  
Come and explore the wonderful world of art, colour,  
and history!*

This Authorless Event Guide includes suggestions or games that will help make a successful event in bookshops, schools, or libraries to accompany both the *Colour Gallery* and *Word Museum* books.

You'll have to gauge the size and age range of your group to determine which of these activities will work best and put the activities in any order you like.

*Some other suggestions to enhance your event:*

### **Play Dress-up**

Encourage children to come dressed as an artist or an artwork they like or a famous historical person. This could be a colourful outfit like the mosaic in the book or a famous artist such as Frida Kahlo. Arrange a costume parade through your school, library or shop.

### **Get Drawing**

Set aside some drawing time and create a "gallery" with the finished works. Ask children to draw their favourite image from the colour gallery scavenger hunt.

*Thank you!*

*Have a  
great time!*



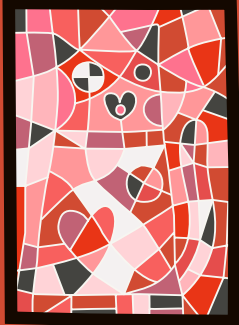





**LITTLE TIGER**  
LONDON



# Scavenger Hunt

Play this fun game to find the missing artwork.

Place the six artwork pictures around a room and ask the children to find them. They need to cross them out on the sheet below. The first child to find them all is the winner!

<b>Mosaic</b> 	<b>Abstract</b> 
<b>Portrait</b> 	<b>Still Life</b> 
<b>Sculpture</b> 	<b>Landscape</b> 



LITTLE TIGER  
LONDON

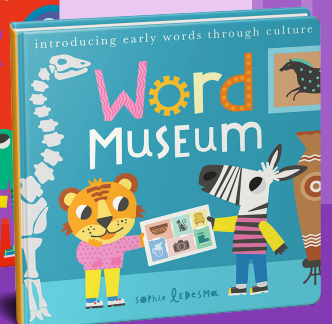
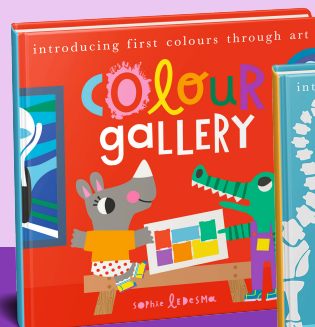


# Create your own collage!

Cut out the coloured shapes. Using glue, create your own collage on a separate piece of paper.



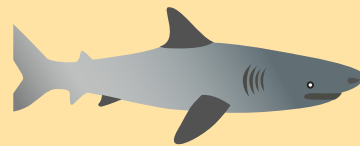
LITTLE TIGER  
LONDON





Draw a line to match the  
right word to the picture.

Book



Banana



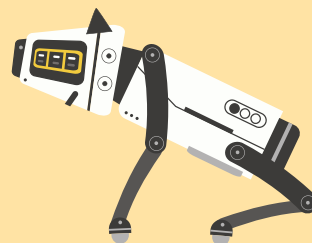
Cat



Robot



Hat



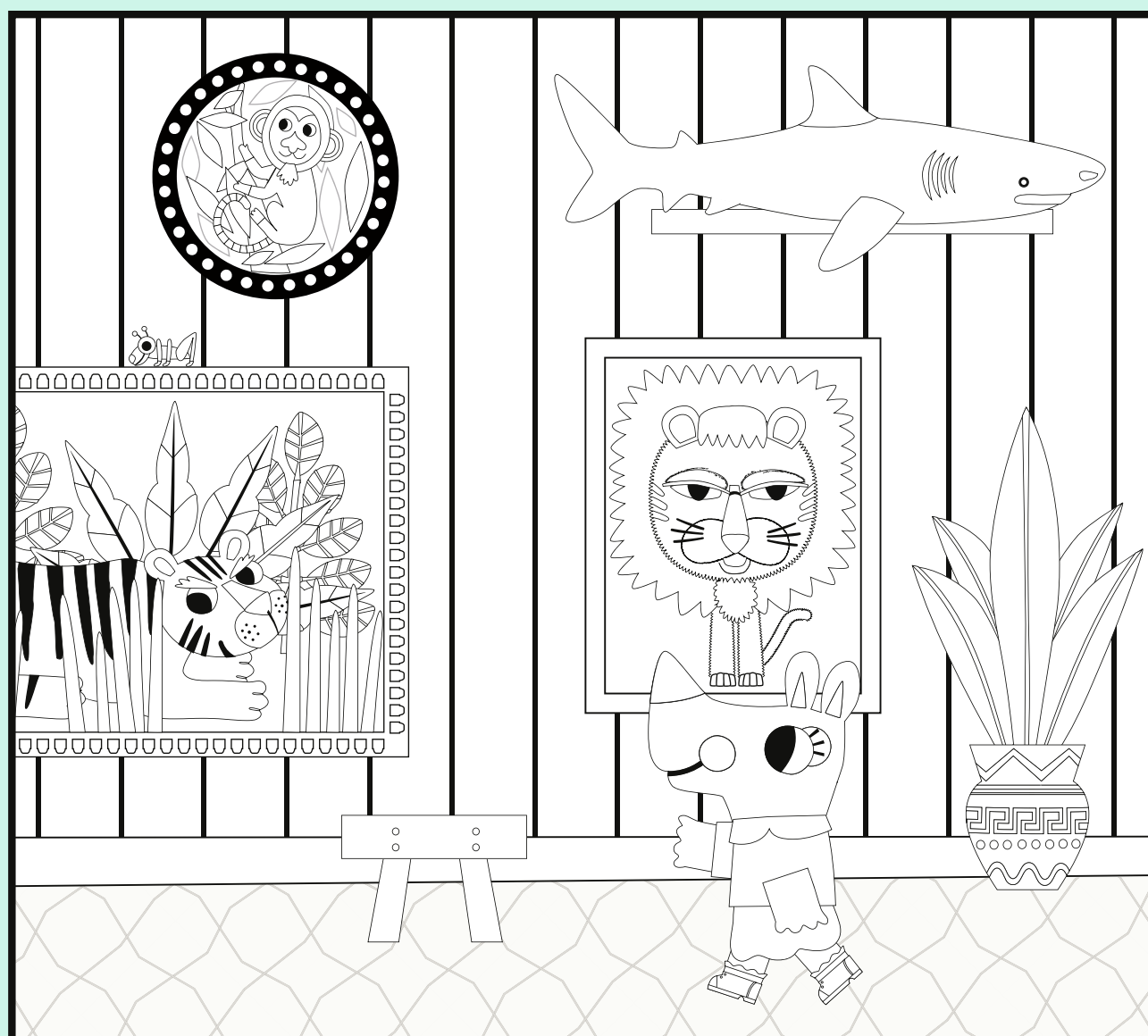
Shark



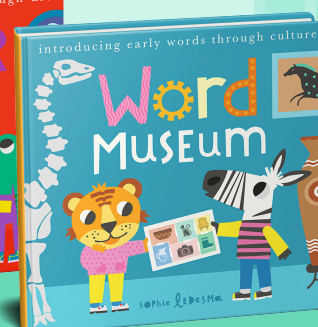
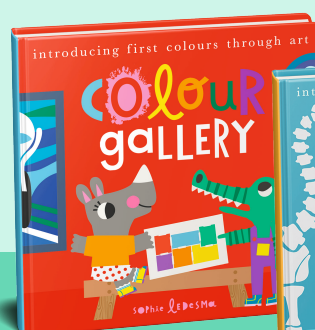
LITTLE TIGER  
LONDON



Colour in a scene from the Animal Gallery.  
Label the animals in the picture. Do any  
of these creatures live underwater?



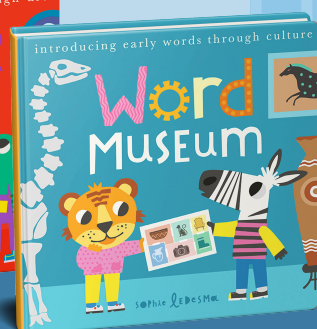
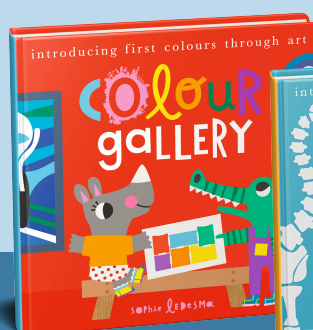
LITTLE TIGER  
LONDON



Can you help the friends find their way  
to the Rooftop Café?



LITTLE TIGER  
LONDON





LITTLE TIGER  
LONDON

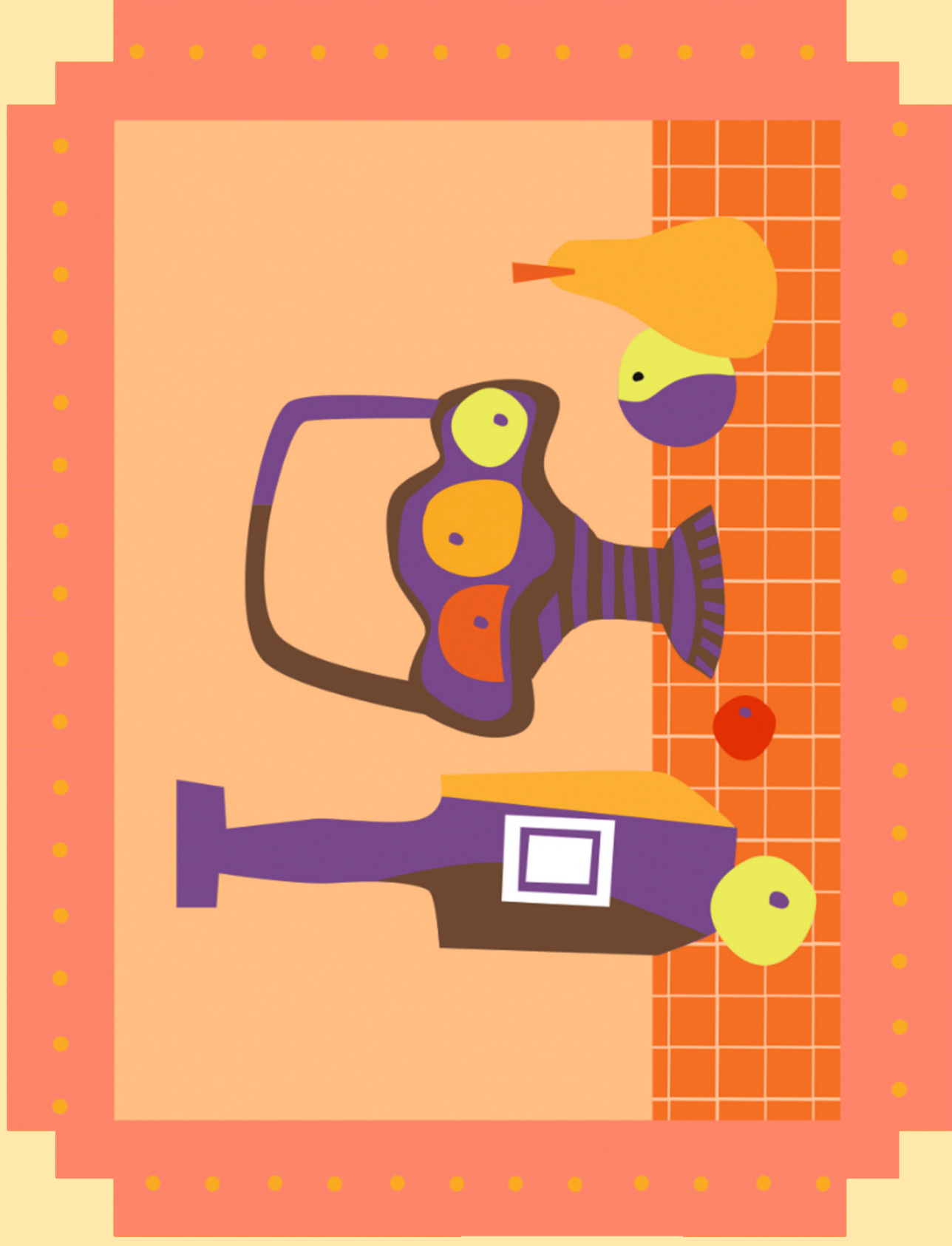


LITTLE TIGER  
LONDON





LITTLE TIGER  
LONDON



LITTLE TIGER  
LONDON



LITTLE TIGER  
LONDON



LITTLE TIGER  
LONDON